



## OTEN Information, Digital Media and Technology

### Support Cluster

**ICTSAS201 Maintain inventories or equipment, software and documentation**

**ICTSAS208 Maintain ICT equipment and consumables**

(TAFE NSW – Open Training and Education Network, Provider Code: 90004)

#### Cluster description

**ICTSAS201 Maintain inventories or equipment, software and documentation**

You will be able to record and store details of software, hardware, and technical documentation.

**ICTSAS208 Maintain ICT equipment and consumables**

You will be able to maintain the operation of basic computer hardware and peripherals, including the replacement of consumables.

#### To ensure you leave us with the most up to date qualification...

If during or after your enrolment, the course in which you are enrolled is updated in line with national industry standards, the Institute reserves the right to transition you into an alternate course. If this becomes necessary, the Institute will advise you of the change and the arrangements which will be available for you to complete your alternate course.

#### What are the requirements? (Including Recognition of Prior Learning)

##### Are there any additional local entry requirements?

There are no entry requirements for this cluster course.

A number of courses may require prospective students to provide additional information such as documentation, an expression of interest, evidence that you are already employed as an apprentice, or preferred prior study (or equivalent).

Are you under 17 years of age? Before enrolling please read the NSW Department of Education and Communities - The new school leaving age. Access to Government Subsidised Training in TAFE NSW has changed please refer to the policy. [The new school leaving age.](http://oten.tafensw.edu.au/enrolling/how-to-enrol/351/)  
<http://oten.tafensw.edu.au/enrolling/how-to-enrol/351/>

#### Do I need additional resources to study this course?

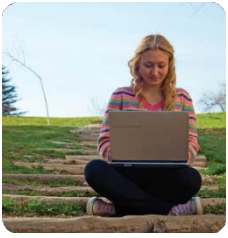
To complete this qualification you will need a computer or regular access to an IBM compatible computer with up to date virus protection and:

- access to internet connection
- email access which will be used for subject and course notices
- Microsoft Office 2013 or Microsoft Office 365

1300 362 346 or (02) 9715 8333

 [oten.tafensw.edu.au](http://oten.tafensw.edu.au)





## Unique Student Identifier (USI)

From 1 January 2015, all students participating in Nationally Recognised Training in Australia will need to have a Unique Student Identifier, or USI.

This includes students completing an apprenticeship, skill set, and certificate or diploma course.

A USI gives you access to your online USI account and will contain all of your nationally recognised training records and results from 1 January 2015 onwards. Your results will be available in your USI account in 2016.

When applying for a job or enrolling in further study, you will often need to provide your training records and results. One of the main benefits of the USI is that you will have easy access to your training records and results throughout your life.

### How to get a USI

It is free and easy for you to create your own USI online at [usi.gov.au](http://usi.gov.au). Your local Customer Service office can also provide further information and assistance. If you already have your USI you can enroll with TAFE WSI.

*Current as at 28/10/2015*



# oten



1300 362 346 or (02) 9715 8333



[oten.tafensw.edu.au](http://oten.tafensw.edu.au)